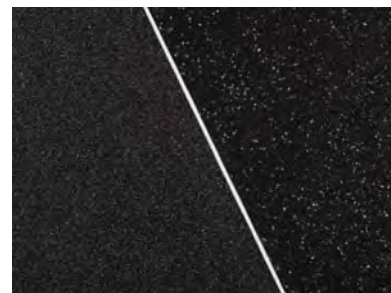




the future is safer with altro

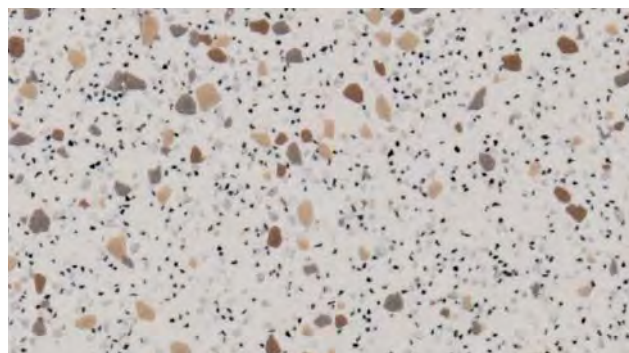
altro



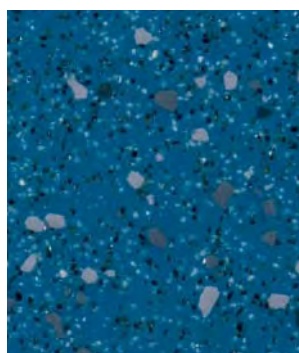
## Altro Walkway™ 20 / VM20



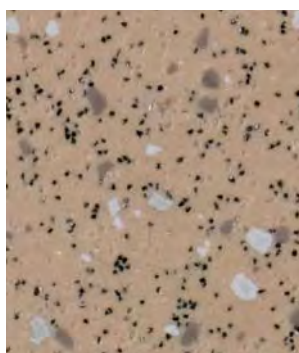
Lupin VMI2059  
WR286 / A1M286 / LRV 17



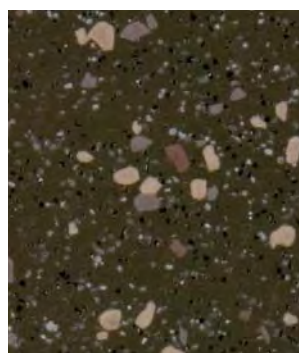
Winter VMI2053  
WR105 / A1M1 / LRV 61



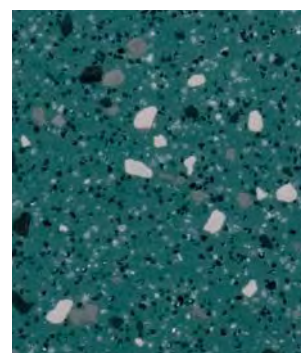
River VMI2057  
WR71 / A1M71 / LRV 22



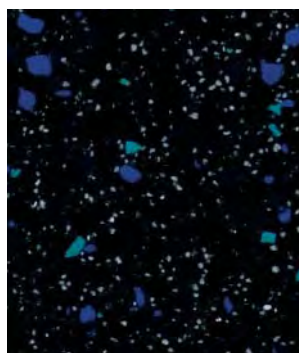
Sand VMI2051  
WR20 / A1M20 / LRV 40



Savannah VMI2050  
WR153 / A1M239 / LRV 19



Tarragon VMI2052  
WR52 / A1M52 / LRV 26



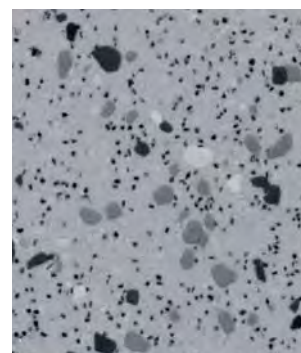
Nightfall VMI2056  
WR72 / A1M72 / LRV 10



Coal VMI2058  
WR100 / A1M100 / LRV 6



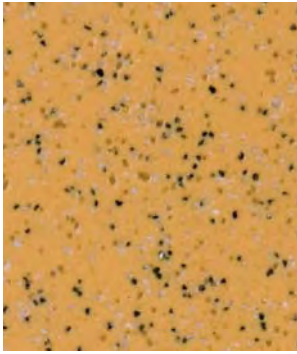
Whale VMI2054  
WR86 / A1M86 / LRV 20



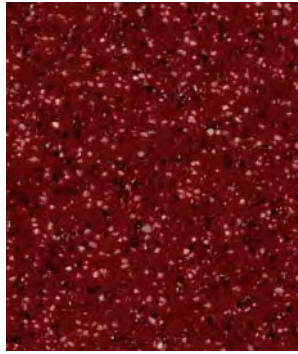
Blizzard VMI2055  
WR79 / A1M191 / LRV 44

Exact material match with samples cannot be guaranteed.  
No podemos garantizar que el material del suelo de seguridad coincida exactamente con el de las muestras.  
Eine exakte Übereinstimmung des Materials mit Mustern kann nicht garantiert werden.

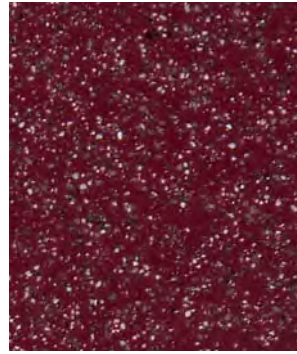
Codes: **LRV** = Light Reflectance Value, **WR** = Weldrods, **A1M** = Mastic  
Códigos: **LRV** = Valor de Reflectancia de la Luz, **WR** = Cordón de soldadura, **A1M** = Mástique  
Abkürzungen: **LRV** = Lichtreflexionswert, **WR** = Schweißschnüre, **A1M** = Altro Mastic Dichtmasse



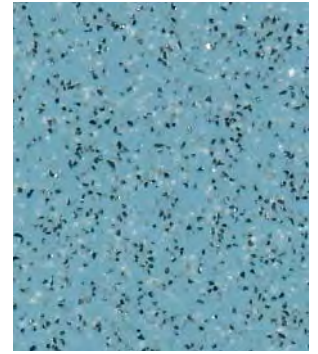
Canary VM2030  
WR247 / A1M247 / LRV 44



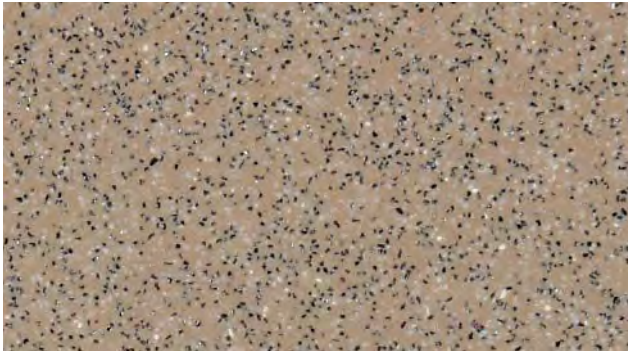
Tango VM2031  
WR42 / A1M42 / LRV 14



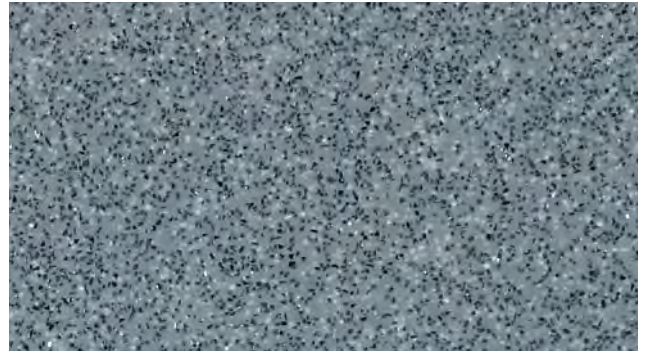
Cherry VM20920  
WR148 / A1M148 / LRV 10



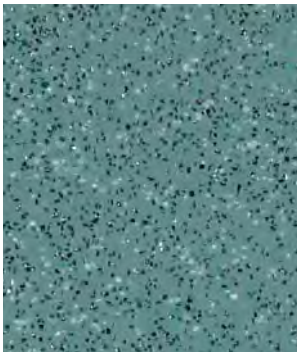
Waterfall VM20912  
WR155 / A1M135 / LRV 31



Biscuit VM20907  
WR146 / A1M20 / LRV 30



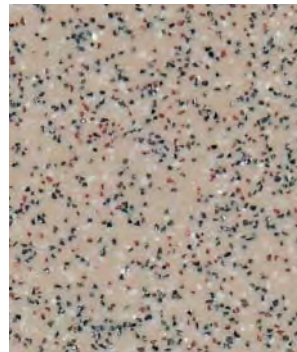
Fog VM20153\*  
WR81 / A1M81 / LRV 27



Skyline VM20332  
WR52 / A1M52 / LRV 24



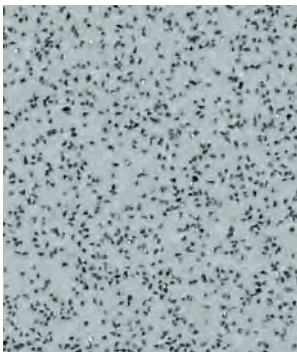
Tundra VM20910  
WR153 / A1M239 / LRV 17



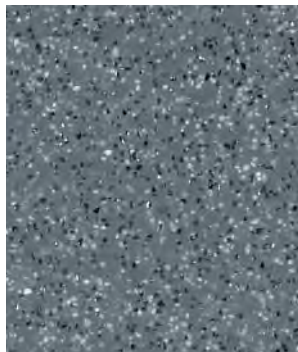
Bone VM20215  
WR20 / A1M20 / LRV 37



Blue VM20412  
WR71 / A1M71 / LRV 22



Cloud VM2014  
WR79 / A1M191 / LRV 41



Dolphin VM2010  
WR86 / A1M86 / LRV 21



Black VM20892  
WR100 / A1M100 / LRV 6



Midnight VM20421  
WR72 / A1M72 / LRV 11

R10



\* SD version available, product code VM20153SD. \* Indica que existe una categoría con disipador de electricidad estática disponible para el código use el código estándar del producto seguido de "SD". Der Zusatz \* SD bezeichnet die antistatischen Ausführungen. Zum bestellen, bitte vorhandene Produktnummer gefolgt von SD verwenden.